



Wafaq Al Shaheqa Trading & Contracting

The answer to all General Construction Requirements & Maintenance needs....



Tel.: 011 2478000
P.O. Box 221402, Riyadh, KSA
Fax: 011 4722213
Kingdom of Saudi Arabia
Email: contracts.dept@wstcco.com
website: www.wstcco.com

Wafaq Al Shaheqa Trading & Contracting a %100 Saudi owned company established in 2011, in the field of Civil & Electro-Mechanical Construction based in Riyadh, Kingdom of Saudi Arabia.

We have been dealing in construction, Specializing in Aluminium & Steel Fabrications & Erection of Thermal Power Plant, Cement Plant, Static and Rotary Equipment's , Fire Proofing of Structures & Pipe - Racks, HVAC Ducting, Air Preheater, Heat Exchangers, Boilers, Conveyers, Economizers, Filters, Mechanical, Piping, Welding And all Finishing works.

We supply a variety of industrial materials manufactured by renowned Companies from across the world like ABB, SEIMENS, HOFFMAN, etc. Our supply covers almost all materials in the field of Electrical Equipment's, Plumbing Materials, Forged products, Dairy & Food Processing Equipment's, Cable Raceways, Energy Plant Equipment's, Structural Steel, and many other miscellaneous materials.

Our Quality control and its documentation are as stipulated by various charts with major Companies in Saudi Arabia.

The manpower supply division is another major advantage, with highly qualified and dedicated team of personnel at hand to execute any type of works, be it short or long term in nature and to the ultimate satisfaction of our valued clients. We are very confident in offering our various services to our esteemed customers.

Commercials (Clients)



- *Middle East Specialized Cables (MESC)*
- *ABV Rock Group*
- *Saudi Pharmaceutical Industries & Medical Appliances Corporation (SPIMACO)*
- *NADEC- The National Agricultural Development Company*
- *Gulf Carton Factory-AI JABR*
- *MA'ADEN- Gold and Base Metals Company (MGBM)*
- *Australia Aviation College Riyadh, KSA*
- *Yamama Group*
- *SEDAR Contracting Company*
- *Thyssenkrupp Industrial Solution*
- *King Fahd University of Petroleum and Minerals (KFUPM) Dhahran, KSA.*
- *King Abdullah Petroleum Studies and Research Center (KAPSARC), Riyadh, KSA.*
- *OBEIKAN SIG Combibloc*
- *GDC Middle East*
- *Drake & Scull International PJSC Company*
- *Saudi Oger Ltd.*
- *Global Environment Management Services (GEMS)*
- *Firatech Arabia Company Ltd.*
- *Philips Saudi Lighting Company*
- *Enigma IT & Security Solutions*
- *Abdullah Al Muzail Contracting*
- *Ahbar Industries*
- *United Alliance Contracting & Trading Company*

Civil Construction works

- Reinforce concrete building Site grading, filling and
- Compaction
- Fencing
- Concrete curbs & walkway
- Water proofing
- Painting

Civil Maintenance works

- Concrete repairs
- Structural repairs
- Grouting
- Water proofing & painting

Electrical Construction works

- Domestic & Industrial
- Electrification

Electrical Maintenance works

- Replacement of cable
- Replacement of switchgears
- Leasing service

Mechanical Works

- Fabrication & Erection of Heavy Structures
- Storage tank fabrication
- Ladder & Gratings
- All types of stainless steel
- Fasteners & Special anchor bolts
- Cooling Towers
- Piping

Aluminium Fabrication

- All kinds of Aluminium works

Equipment Leasing

- Construction Equipment
- Light and Heavy Vehicle

Manpower Supply

- Technical Staff
- Skilled Craftsman
- Semi skilled craftsman

WSTC Trading & Contracting is a supplier of Electrical and Mechanical products serving the projects market, Industrial sector and promoting the principles of reliability and energy efficiency while improving the business performance of our customers and helping to keep our environment green. Our product range meets the relevant local and international standards like SASO, IEC, ANSI, NEMA and are safely installed at all the major customers like SEC, ARAMCO, SABIC, SWCC, NWC, MOH, MOE, MODA etc. fully complying with customers' expectations

Electrical Distribution Products

- ❖ Safety Switches
- ❖ Air circuit Breakers
- ❖ Low Voltage Switchboards
- ❖ Low Voltage Distribution boards
- ❖ Enclosed Circuit Breakers
- ❖ Molded Case Circuit Breakers
- ❖ Miniature Circuit Breakers
- ❖ Earth leakage relays



Conduit and Fittings

- ❖ GRC, EMT conduit and fittings
- ❖ Flexible steel and liquid tight conduit and fittings
- ❖ PVC coated conduit and fittings
- ❖ Schedule 4080/OVC conduit and fittings

Earth and Lightning Protection

- ❖ Air terminals
- ❖ Copper and aluminum Conductors
- ❖ Copper bars
- ❖ Copper tapes
- ❖ Earth plates
- ❖ Ear thing fittings
- ❖ Exothermic welding systems
- ❖ Hardware and accessories



Wire and Cables

- ❖ Low voltage cables
- ❖ Medium voltage cables
- ❖ Instrumentation cables
- ❖ Communication & control cables
- ❖ ACSR overhead line conductors

Cable Termination and Accessories

- ❖ Cable Glands
- ❖ Cable Joints
- ❖ Cable lugs and connectors
- ❖ Cable termination and accessories
- ❖ Splicing and termination tools and accessories
- ❖ Marking systems



Power Metering and Control

- ❖ Control and Load switches
- ❖ Main switches
- ❖ Maintenance and safety switches
- ❖ Photovoltaic
- ❖ Customized switches



Lighting Solutions

- ❖ LED Wall Luminaries
- ❖ Indoor LED fixtures
- ❖ Outdoor ground recessed uplighters
- ❖ Pathway luminaires
- ❖ Emergency / Exit lights



Hazardous Area / Explosion proof Equipment's

- ❖ Explosion proof panel boards
- ❖ Junction boxes
- ❖ Enclosed circuit breakers
- ❖ Conduit outlets boxes and bodies
- ❖ Receptacles and plugs
- ❖ Control stations and accessories
- ❖ Flexible couplings
- ❖ Lighting systems
- ❖ Pushbuttons and pilot light stations



Cable Support Systems

- ❖ Cable ladders and accessories
- ❖ Cable trays and accessories
- ❖ Clamps and hangers
- ❖ U channels and accessories



O/H Transmission and distribution Systems

- ❖ Anchors
- ❖ Copper clad wires
- ❖ Earth fault indicators
- ❖ Fuse cutouts
- ❖ Medium voltage fuses
- ❖ O/H line tools, hardware and Accessories
- ❖ O/H load break switches
- ❖ Pole line hardware
- ❖ Polymer insulators

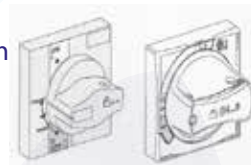
Battery Charges and Batteries

- ❖ Intelligent charger and battery monitor
- ❖ Filtered charger/DC power supplies
- ❖ Complete DC Power systems
- ❖ Engine start battery chargers
- ❖ Filtered single phase charges
- ❖ Filtered 3 phase ch
- ❖ Specialty products
- ❖ Lead Acid batterie:
- ❖ Ni Cd Batteries



Latches, Hinges, Fasteners, Engineered Access

- ❖ Panel/Door latches
- ❖ Swing handles
- ❖ Rod latch system
- ❖ Leaf hinges
- ❖ Draw latches
- ❖ Captive screws
- ❖ Hinges/position control
- ❖ Concealed hinges
- ❖ Side hinges
- ❖ Corner hinges
- ❖ Accessories



Motor Control Components

- ❖ Contractors
- ❖ Motor circuit breakers
- ❖ Thermal overload relays
- ❖ Combination motor starters
- ❖ Enclosed motor starters
- ❖ Terminal blocks



Industrial Automation and Control Products

- ❖ Counters
- ❖ Soft starters
- ❖ Smart relays
- ❖ Plug in relays
- ❖ Timing relays
- ❖ Photo electric sensors
- ❖ Variable Speed drives
- ❖ Programmable controllers



Industrial Consumables

- ❖ Belts-Optibelt,Gat
- ❖ Bearings-SKF,NSK
- ❖ Oils Seals and Gaskets
- ❖ Grease and Lubricants



Mechanical and Plumbing Products:

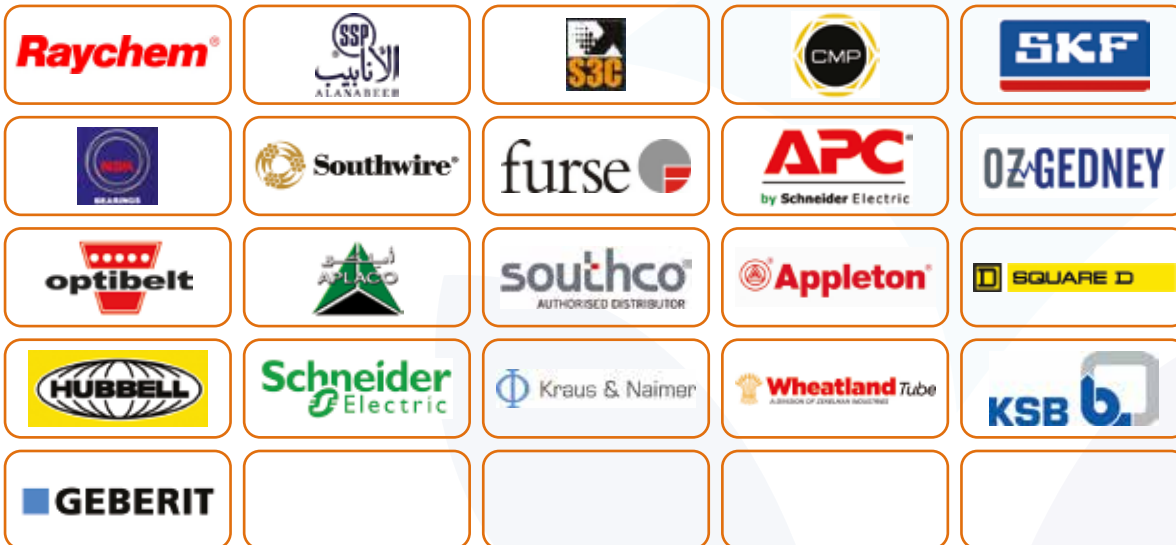
- ❖ **PVC, uPVC & CPVC:** APLACO – KSA, SAPPKO – KSA, NIBCO – USA, NEBRO – KSA
- ❖ **HDPE Pipes, Fittings & Electrofusion:** MMP – KSA, Geberit – Switzerland, Jubail – KSA, Risong – China, Demas – KSA
- ❖ **Cast Iron Pipes & Fittings :** Amintit – KSA, Sadip – KSA, SCF – KSA
- ❖ **RTR Pipes & Fittings:** Amintit – KSA, Saudi Hepco – KSA
- ❖ **PPR Pipes & Fittings:** Hakan Plastics – Turkey, Al-Koblan – KSA, Al-Nasher – Europe
- ❖ **Black Steel Pipes & Fittings:** SSP – KSA, National – Al Jazeera Pipe & Hitachi Black Steel Fitting KSA
- ❖ **Pipes, Fittings, Cabletray Accessories:** Bahara Conduits – KSA, EGA Conduits – KSA, Decodec – KSA, EMT Conduits – KSA, HSE (Hesham El-Sewedy) 3M All Type and Kinds Tapes, Legrand, Rema (Other Cable ACC.) CTL Joints
- ❖ **RC Pipes & Fittings:** Amintit , JDCO , Al-Bilad , Acwa Pipes , Ameron Pipes
- ❖ **Stainless Steel Pipes & Fittings :** Saudi Steel Pipes (SSP), Hitachi Japan
- ❖ **Valves & Fire Hydrante:** AVK , JADFF – KSA , Nibco – USA, WATT – USA, PEX – UK, Crane –UK, All Italian Valve SPF – KSA
- ❖ **Manhole Covers, Grating Channel & Floor Drain, Clean Outs:** Saudi Castiron – KSA, Riyadh Foundary – KSA, SCF – KSA
- ❖ **Pumps:** Waste Water Pump, Irrigation Pump Systems And Fire Pumps, Vertical Turbines, & Submersible Pumps- KSB, SPF, National
- ❖ **Sanitary Fixtures, Sinks & Bathroom Accessories:** Grohe – Germany, Ideal Standard – Italy, Milano



Partner Network

Our partners work together with us to offer valuable solutions. This leads to successful, long-term relationship with many satisfied customers through our capabilities and solutions. Partnering with right vendors reduces clients project risk and total cost of ownership and streamlines the vendor evaluation and procurement processes.

Our Partners includes some of the leading brands in the Industry such as Schneider Electric, Raychem, Furse, Emerso and many More.



Civil Construction works



Supply of Man Power



SHOWROOM RENOVATION - CARTON LAB AL-JABR



SHOWROOM CONSTRUCTION - Jazirath Smaa Fashion Company - (REDTAG) Nairriyah Branch & Dammam West Avenue Mall



FLOORING WORKS: Epoxy Floorings, Safety Walkways, Raised Floorings and Vinyl Floorings



Maintenance and Repairs of HVAC systems - NADEC-Al Harad Plant and Gulfcarton Factory-Al Hasa



INSTALLATION OF ACOUSTIC FALSE CEILING SPIMACO (PDTDC) - AL Qassim



HDPE PIPE INSTALLATION WORKS SPIMACO (PDTSC) - Al Qassim



CARPENTRY WORK - FCU WOODEN CASING ABV Rock Group



INSTALLATION OF METAL SUSPENDED CEILING College of Dentistry - Riyadh



HEADOFFICE - DAMMAM PLUMBING WORKS *Abdullah Al Muzail Contracting*



INSTALLATION OF PVC SHEDS AND INTERLOCK TILES *Australia Aviation College Riyadh, KSA*



GYPSUM BOARD PARTITION WORKS Firatech Arabia Solutions - Administrative Office



FABRICATION OF SITE PORTABLE CABINS *Saudi Oger Contracting - Kaust - Jeddah*



CIVIL, STRUCTURAL AND WATER PROOFING WORKS



FABRICATION & ERECTION OF STORAGE SHEDS AND HANGARS



ELECTRICAL & FIRE FIGHTING WORKS



HVAC DUCTING & INSTALLATION WORKS



FLOORING & CEILING WORKS



ELEVATION & CLADDING WORKS



CLADDING & GLASS WORKS



Loss Prevention Program

The primary objective of this program is to promote general safety practices among workers and to explain the needs and importance of the safety on site and prevention of accidents. Safety should be considered as a matter of prime importance.

Plan of Action

In order to achieve the above mentioned goal the following course of action is being taken into effect. Safety Orientation of new employees Educate employees explaining in detail the necessity and importance of personal safety and that of equipment. Enforce safety rules and regulations. Strict adherence to the loss prevention requirements of Saudi Aramco's Safety standards and applicable Saudi Arabian Laws.

Safety Meeting

Before starting a job, key personnel should meet to discuss accident prevention, Study the job layouts, determine plans and schedules, emphasize, requirements and elaborate on procedures. Through inspection of job site and adjoining properties is done and a brief supplemental safety program development and distributed to supervisory personnel who will handle the job.

- *Weekly safety meetings for supervisory personnel to review acid that have occurred during the previous week and take note of safety deficiencies and establish measures. Job hazards, contemplated control, protective equipment and personnel training should be covered.*
- *Records for meeting dates are maintained. They highlight personnel who will conduct the meeting and summary of discussions which will be forwarded to Project Engineer.*
- *Meeting shall be held once a week under the direction of the foreman assisted by safety personnel. Accidents and near-accidents should be discussed and present action to prevent reoccurrence.*
- *Foreman will explain the safe way for*
- *Performing the Job. Superintendents and other key personnel*
- *May also attend these meetings.*

The following subjects are discussed in the employee

Safety induction training, Hazards on the Jobsite, Necessary precautions against the above hazards, Personnel protective equipment ladders Scaffoldings, Housekeeping and sanitation.

Lift devices and material handling, First Aid and Emergency pro c Reporting Injuries and unsafe conditions, Safety rules and regulations and disciplines Responsibility in safety.

1. Purpose

1.1 To establish quality control procedures for ascertaining the stability of excavation and backfill

2.0 Scope

2.1 The procedures describe the methods for the monitoring of excavation and backfill activities including the equipment used and testing of solids in accordance with the applicable standards, contract drawings and the contract specifications.

3.0 Responsibilities

3.1 WSTC shall monitor the performance of appropriate tests made by an independent laboratory on soils as necessary to ensure the stability of the sub grade after excavation and of the combustibility of the backfill placed.

3.2 WSTC shall monitor the excavation, placement and consolidation of backfill to ascertain that it is being done in accordance with the contract specifications.

4.0 Procedures

4.1 WSTC shall monitor procedures for controlling the implementation of excavation and backfill activities and that the equipment used can perform the work and is kept in good operating conditions.

4.2 Excavated materials found to be unsuitable for backfill shall be disposed of as specified.

4.3 Materials to be used for backfill shall meet the quality requirements of the contract specifications prior to its use on project.

4.4 Follow-up inspections shall be performed by WSTC personnel during excavation and backfilling operations to ensure the operations conform to the specifications requirements.

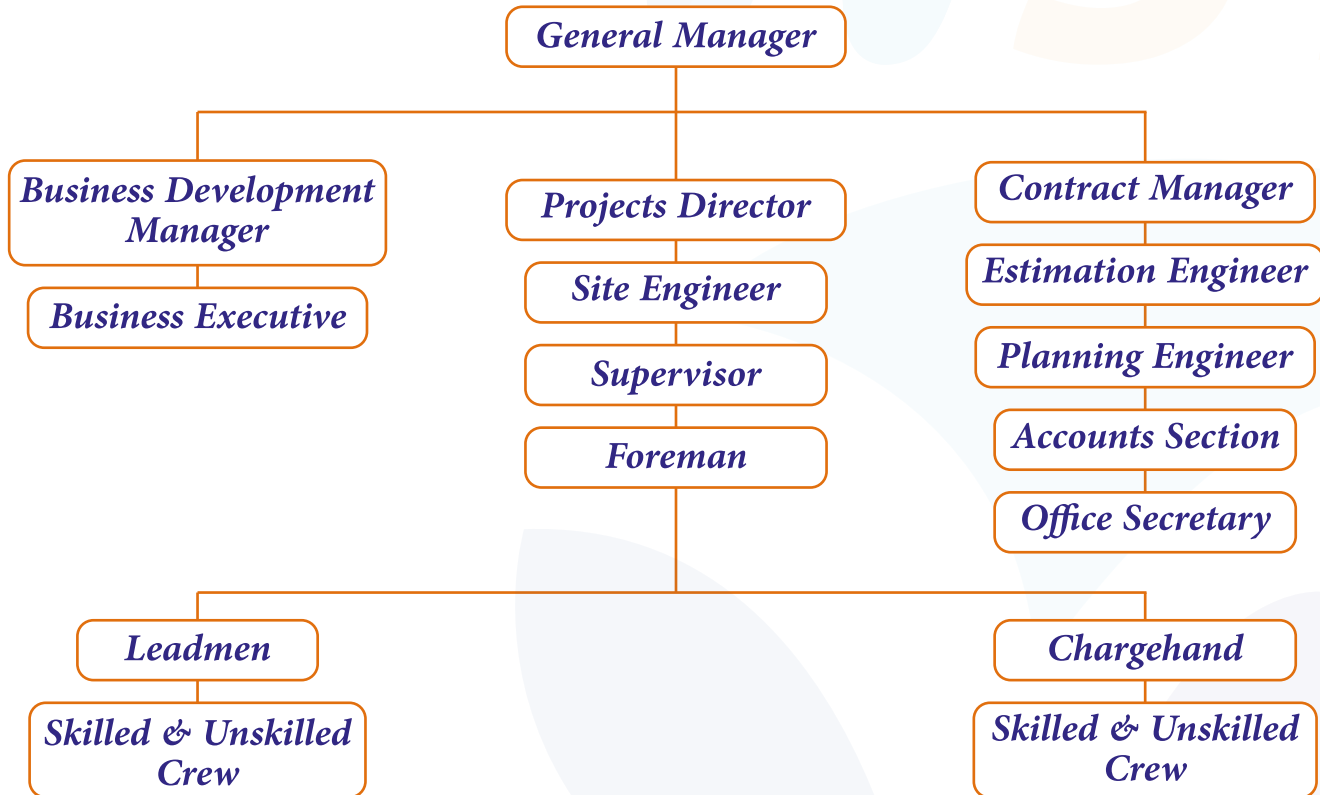
5.0 Acceptance Criteria

5.1 Acceptance of excavation work shall be based on the lines and grades as indicated on the contract drawings and the construction requirements in the contract specifications.

6.0 Reports and Records

6.1 The results of soil tests conducted by the independent laboratory shall be documented on the appropriate report form for the particular type of test performed. Deficiencies in the results of soil tests which can be corrected without further evaluation or additional corrective actions or additional documentation shall be reported on a non-conformance report.

6.2 Results of follow up inspections shall be reported on the attached checklists as applicable to the activities inspected.





Tel.: 011 2478000
P.O. Box 221402, Riyadh, KSA
Fax: 011 4722213
Kingdom of Saudi Arabia
Email: contracts.dept@wstcco.com
website: www.wstcco.com

